



The place to be these holidays!

TheirCare  
Where Kids love to be!

presents

# MAD FUN

AUTUMN Holiday Festival

featuring... YOU!



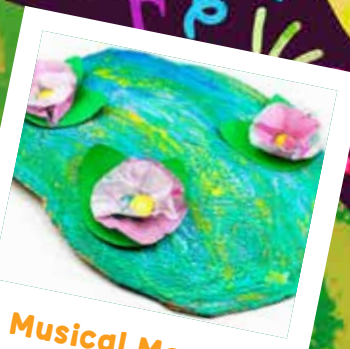
Pass the Popcorn



Bubble - O - Fun



Silent Disco



Musical Monets

Bookings close **Friday 21st March**

Please return booking form to service

## Holiday Program Important Information!

### What to bring

- ☐ On excursion days only please bring a packed lunch
- ☐ Labelled water bottle
- ☐ Suitable clothing for an active day – closed toe shoes and a jacket if it is predicted to be wet and cold
- ☐ SunSmart hat for Spring and Summer holidays
- ☐ Medical Management Plan & Medication if applicable – see below for details



### Don't forget!

- ☐ Keep your lunchbox nut-free to keep everyone safe
- ☐ Do not include food items that need to be reheated
- ☐ Label all items with child's name!
- ☐ Bus departure and arrival times are indicative only. For an accurate estimated time of arrival and departure please contact your service directly.



### Personal belongings

Money and other valuables should be left at home.

If brought to the service, these items remain the responsibility of the family. TheirCare does not accept responsibility for loss or damage.



### TheirCare provides

- ☒ Breakfast, morning tea, lunch, and afternoon tea
- ☒ Sunscreen



### Unexpected changes to activities

In the unlikely event that an activity is unable to run, an alternative activity will be provided.



Activities and times are subject to change due to unforeseen circumstances such as severe weather or provider availability.

General daily advertised activities are subject to change due to unforeseen circumstances, at the discretion of the service coordinator.

### Changes to your booking

Please contact your Service Coordinator to make changes to your booking.



### Serious stuff!



### Medical Management Plan & Medication

All children who have been diagnosed with a medical condition including allergies, food/chemical intolerances, anaphylaxis, asthma, epilepsy will need to provide:

- ☐ a completed Medical Management Plan with a colour photo
- ☐ necessary medication

Please note it is a legal requirement under the Education & Care National Regulations and the Terms and Conditions for booking that these are provided.

In the interests of child safety, care maybe refused on the day should the appropriate documentation or medication not be supplied.



If you have any questions, please feel free to speak with one of our friendly Educators at the service or call Customer Support **1300 072 410**.





Excursion



Super  
Excursion



Special  
Activities



In-house  
Fun



Public  
Holiday

\*With the maximum CHILD CARE SUBSIDY. \*\*Without the CHILD CARE SUBSIDY.

  **Excursion & Super Excursions days:** Arrive at the service by 9:00 am. Pick-up after 2:30 pm. Wear runners & socks.



MONDAY

 **7 APR**



**Taste the  
Rainbow**

Join us in service as we embark on a journey with the fairies! Engage your fine motor skills to prepare fairy bread balls. Mix up fun and yummy ingredients together with your friends to create your colourful, tasty and magical treat. Later on, engage with beautiful ribbon wand dancing and delightful sensory rainbow foam!

TUESDAY

 **8 APR**



**Funky  
Flashback**

Get ready to groove at the Retro Dance Party! Work on your gross motor skills with funky tunes and retro vibes, it's time to dance like it's the good ol' days! After the funky fun, get messy with artsy squeegee art! Then we'll be making our very own DIY sensory bags we will get to play with!

WEDNESDAY

 **9 APR**



**Bubble - O - Fun**

Get ready for a splash of colour with Rainbow Bubble Magic! Blow and catch magic bubbles and enjoy making rainbow bubble snakes. You will get to take home your own reusable bubble kit. The fun continues as you will get to make bubble paint butterflies and choose your own adventures.

THURSDAY

 **10 APR**



**Pass the  
Popcorn!**

Today's movie from DreamWorks animation the movie Dogman. When a faithful police dog and his human police officer owner are injured together on the job, a harebrained but life-saving surgery fuses the two of them together and Dog Man is born. Dog Man is sworn to protect and serve-and fetch, sit and roll over.

FRIDAY

 **11 APR**



**Musical Monets**

Enhance your artistic knowledge as we recreate Monets Waterlily masterpiece. Show off your favourite dance moves to the tunes at service. Work on your self-confidence and share your creativity with others at service. Later on, learn about colour theory as you watch water move through material with Walking water rainbows.

MONDAY

 **14 APR**



**Circus Academy**

If you have ever dreamed of joining the circus, this one is for you! Learn and develop circus skills as well as boosting self-confidence and gross motor skills using special circus equipment! Back at service the fun keeps going as we make our own Inflatable Glove Monsters, then join in on a group game of Dino Footprints!

TUESDAY

 **15 APR**



**Harps a Breeze**

Experience the magic of music! This cultural music experience uses the harmonica to boost auditory skills, refine fine motor coordination, and build confidence as we explore global sounds. Afterwards, have more fun crafting an Autumn Leaf Hedgehog using natural material and creating playful STEM Cloud Dough!

WEDNESDAY

 **16 APR**



**Bounce &  
Beyond**

JUMP into fun times as we head to our favourite indoor play venue! Today TheirCare has taken over the venue, as we bounce to new heights of fun with the parkour arena, ninja course and more! Back at service, the fun continues with sticky spider webs and a marbled Fall leaf painting!

THURSDAY

 **17 APR**



**Art Attack**

Join us today in service for a day of creativity. Draw the rainbow and see the magic as we turn them into secret messages! We will have a smashing time creating our own friendly monsters. Become confident and hands on learners with Drum Paintings, create your art and feel the beat.

FRIDAY

 **18 APR**

