

# Holiday Program Important Information!

## What to bring

- ☐ A healthy morning tea and lunch
- ☐ A labelled drink bottle for water
- ☐ Suitable clothing for an active day – closed toe shoes and jacket if wet/cold
- ☐ SunSmart hat for Spring and Summer holidays
- ☐ Medical Management Plan & Medication if applicable – see below for details



## Don't forget!

- ☐ Keep your lunchbox nut-free to keep everyone safe
- ☐ Do not include food items that need to be reheated
- ☐ Label all items with child's name!
- ☐ Bus departure and arrival times are indicative only. For an accurate estimated time of arrival and departure please contact your service directly.



## Personal belongings

Electronic devices, money and other valuables should be left at home.

If brought to the service, these items remain the responsibility of the family. TheirCare does not accept responsibility for loss or damage.



## TheirCare provides

- ☒ Breakfast and afternoon tea snack
- ☒ Sunscreen
- ☒ Water to refill bottles



## Child Care Subsidy

Please note that subsidised hours are calculated and allocated by Centrelink on a fortnightly basis. Check Centrelink for eligibility.



## Unexpected changes to activities

In the unlikely event that an activity is unable to run, an alternative activity will be provided.

Activities and times are subject to change due to unforeseen circumstances such as severe weather or provider availability. If an alternative cannot be sourced we will update your invoice to reflect this.



## Serious stuff!

### Medical Management Plan & Medication

All children who have been diagnosed with a medical condition including allergies, food/chemical intolerances, anaphylaxis, asthma, epilepsy will need to provide:

- ☐ a completed Medical Management Plan with a colour photo
- ☐ necessary medication

Please note it is a legal requirement under the Education & Care National Regulations and the Terms and Conditions for booking that these are provided.

In the interests of child safety, care may be refused on the day should the appropriate documentation or medication or medication not be supplied.



## Changes to your booking

Simply log into your account anytime to make the relevant changes or call us between 6:30am – 9:00pm weekdays on 1300 072 410.



## Fees for changes to your booking

More than 5 days	Less than 5 days *	On the day
No Charge	\$10.00	Full Fee

\*Less than 5 days from the start of the booking (120 hours from the start of the session).

When making additional bookings, the \$10.00 fee is eligible for the Child Care Subsidy, which means you may only need to pay the gap, depending on your families' circumstances.



If you have any questions, please speak with one of our friendly Educators or call Customer Support on 1300 072 410.



**TheirCare**  
Where Kids love to be!

The place to be these holidays!

## Spring Holiday Program



**Silly Slime**



**Movie Magic**



**Build a Bot**



**Footy Fun**

**Book now at [theircare.com.au](http://theircare.com.au)**

Save up to 90% with the Child Care Subsidy



**Excursion**



**Super  
Excursion**



**Special  
Activities**



**In-house  
Fun**



**Public  
Holiday**



### Challenge Royale

Are you up for the challenge? Test your science skills using magnets, ice, and balloons. Who will be victorious?

#### ★ Defy Gravity with Magnets

**Additional fun:**  
Space mural astronauts, your name in stars, astronaut costumes plus plenty of time to choose your own space adventure.

**From as low as** \$7.17 with the maximum Child Care Subsidy. **Full fee** \$71.68 without the Child Care Subsidy.

**MONDAY**  
**18**  
**SEPTEMBER**



### What the Buzz?

Bee ready! Construct the ultimate bee mansion, make your own bee finger puppet, and join in a game of ultimate Fris-BEE!

#### ★ Bee Hive

**Additional fun:**  
Ultimate Fris-bee, Bees and Butterfly tag, kaleidoscope plus plenty of time to choose your own adventure.

**From as low as** \$7.86 with the maximum Child Care Subsidy. **Full fee** \$78.54 without the Child Care Subsidy.

**MONDAY**  
**25**  
**SEPTEMBER**



### Mad Science Museum

Hypothesise, predict, and best of all experiment! Have a BLAST (literally) with this Silly Science fun. Become the Scientist creating chemical changes, watching rockets blast off, and turning seaweed into slime.

#### ★ Science Workshop

**Additional fun:**  
Bee and butterfly tiggy, DIY robotic hand, frog and lily pad craft, plus plenty of time to choose your own adventure.

**From as low as** \$9.01 with the maximum Child Care Subsidy. **Full fee** \$90.05 without the Child Care Subsidy.

**TUESDAY**  
**19**  
**SEPTEMBER**



### Insect-A-Mania

Today we will explore a fascinating array of live invertebrates and mini beasts. Discover the biology of backyard bugs in an interactive workshop that is sure to be fly.

#### ★ Native Animals Incursion

**Additional fun:**  
Playdough animals, monkey tag, chicken clucker experiment, plus plenty of time to choose your own adventure.

**From as low as** \$9.01 with the maximum Child Care Subsidy. **Full fee** \$90.05 without the Child Care Subsidy.

**TUESDAY**  
**26**  
**SEPTEMBER**



### High Altitude

Feel the pull of gravity as we scale the rock-climbing walls! Use the momentum and take on a challenge as we clip in and climb.

**Arrive at the service by 8:30 am. Pick Up After 2:30 pm. Wear runners & socks.**

#### ★ Rock Climbing Excursion

**Additional fun:**  
Lego beyblade spin off, recharge group game, STEM catapults, plus plenty of time to choose your own adventure.

**From as low as** \$11.31 with the maximum Child Care Subsidy. **Full fee** \$113.07 without the Child Care Subsidy.

**WEDNESDAY**  
**20**  
**SEPTEMBER**



### Footy Fever

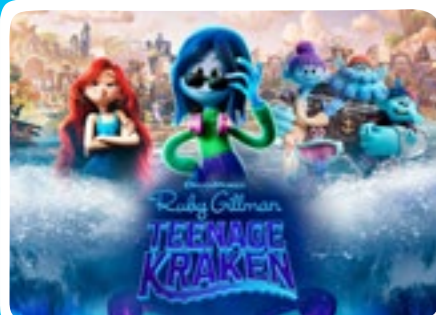
Let's kick off Grand Final week with 2.5 hrs of FUN. Get ready and jump into your footy gear. Kicking, handballing and crafts will put our skills to the test. Umpired by accredited coaches plus a special guest appearance!

#### ★ Footy Carnival Excursion

**Additional fun:**  
Tail tiggy, bubble paint aliens, plus plenty of time to choose your own adventure.

**From as low as** \$12.46 with the maximum Child Care Subsidy. **Full fee** \$124.58 without the Child Care Subsidy.

**WEDNESDAY**  
**27**  
**SEPTEMBER**



### Ruby Gillman, Teenage Kraken

A shy adolescent learns that she comes from a fabled royal family of legendary sea krakens and that her destiny lies in the depths of the waters, which is bigger than she could have ever imagined.

**Arrive at the service by 8:30 am. Pick Up After 2:30 pm. Wear runners & socks.**

#### ★ Movie Excursion

**Additional fun:**  
LEGO ziplines, epic trivia tiggy, hoop gliders, plus plenty of time to choose your own adventure.

**From as low as** \$11.31 with the maximum Child Care Subsidy. **Full fee** \$113.07 without the Child Care Subsidy.

**THURSDAY**  
**21**  
**SEPTEMBER**



### Chain Reaction

Gee-Fizz! You'll mix ingredients to create chemical reactions to make your own homemade fizzy paints! Then explore the magic of electricity by sending your hover plate into orbit!

#### ★ Fizzy Art

**Additional fun:**  
Hover plates, lava lamps, chain tiggy plus plenty of time to choose your own adventure.

**From as low as** \$7.17 with the maximum Child Care Subsidy. **Full fee** \$71.68 without the Child Care Subsidy.

**THURSDAY**  
**28**  
**SEPTEMBER**



### Silly Science

Time to get silly in the name of science! Have a ball making silly string slime, rainbow tambourines and then play asteroid dodgeball!

#### ★ String Slime

**Additional fun:**  
Marbled planets, asteroid dodgeball, rainbow tambourines plus plenty of time to choose your own adventure.

**From as low as** \$7.86 with the maximum Child Care Subsidy. **Full fee** \$78.54 without the Child Care Subsidy.

**FRIDAY**  
**22**  
**SEPTEMBER**



**NO SERVICE** **Public  
Holiday!**

**FRIDAY**  
**29**  
**SEPTEMBER**

